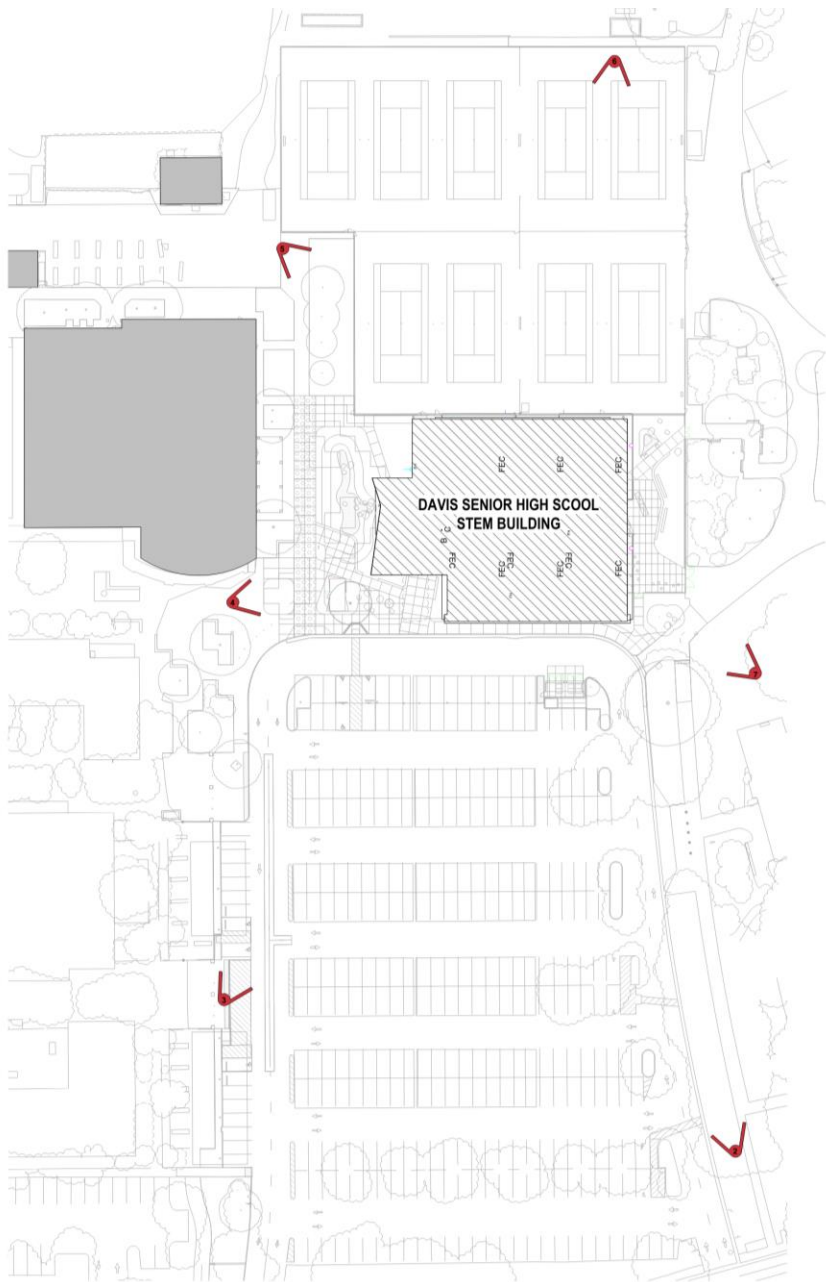
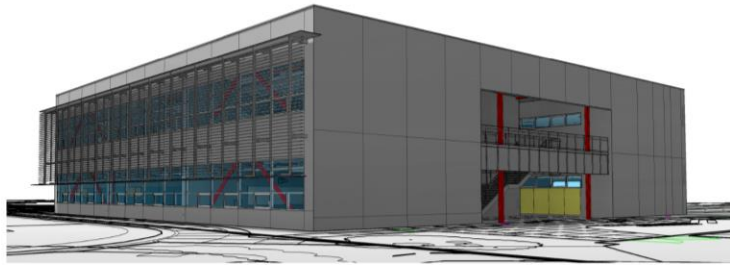


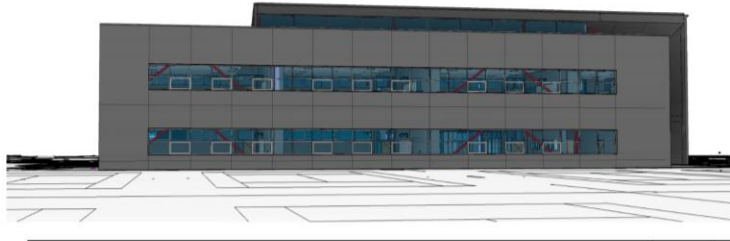
Exterior Renderings



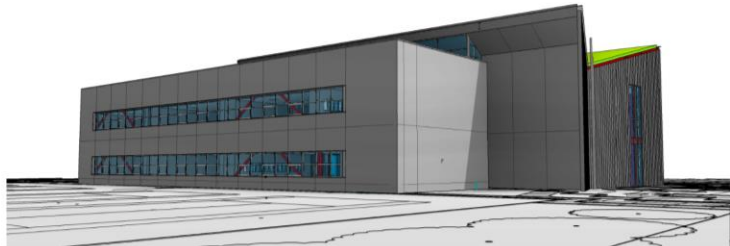
DAVIS SENIOR HIGH SCHOOL
STEM BUILDING



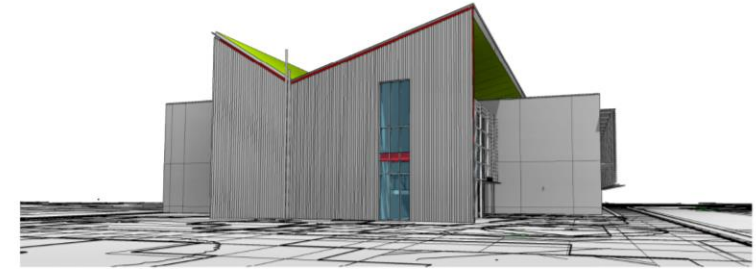
SIGHT LINE VIEW 7



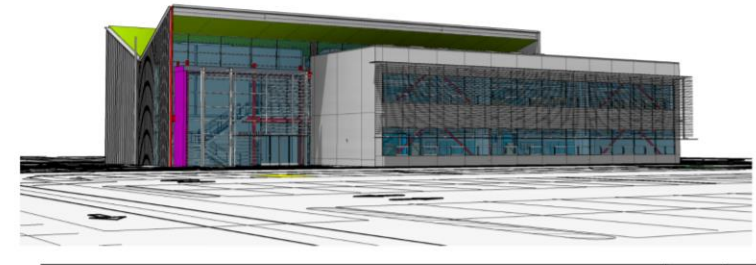
SIGHT LINE VIEW 6



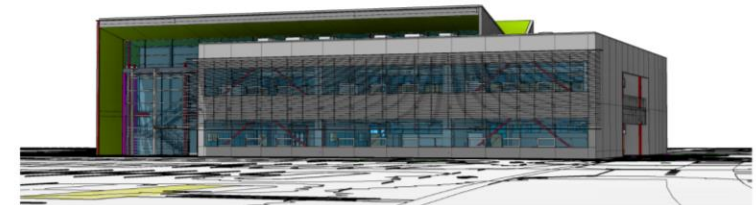
SIGHT LINE VIEW 5




SIGHT LINE VIEW 4



SIGHT LINE VIEW 3



SIGHT LINE VIEW 2

 VIEW REFERENCE -
5'-6" ABOVE GRADE, TYP.

 PROPOSED BUILDING

 (E) BUILDING



USHS STEM CENTER

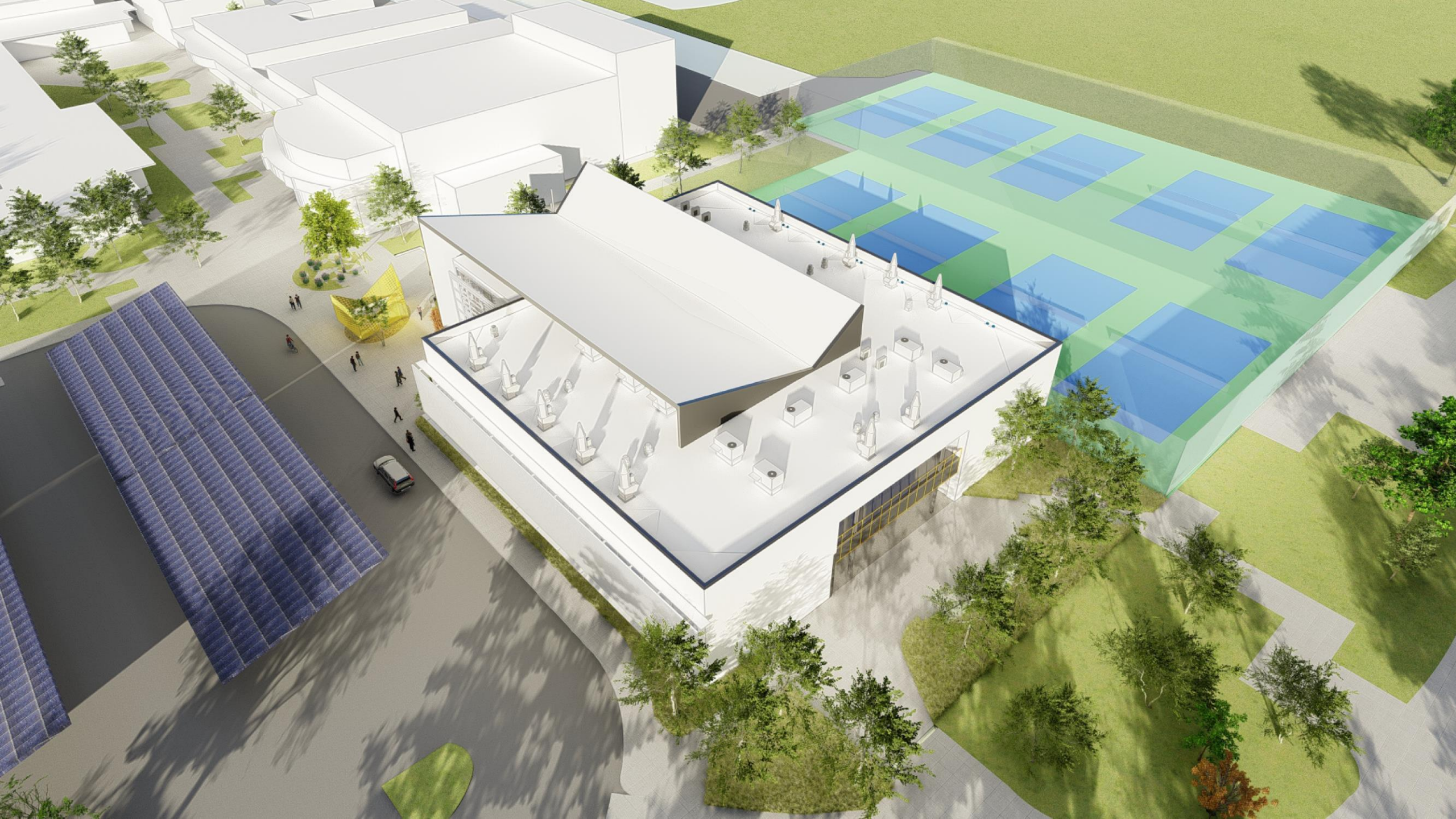








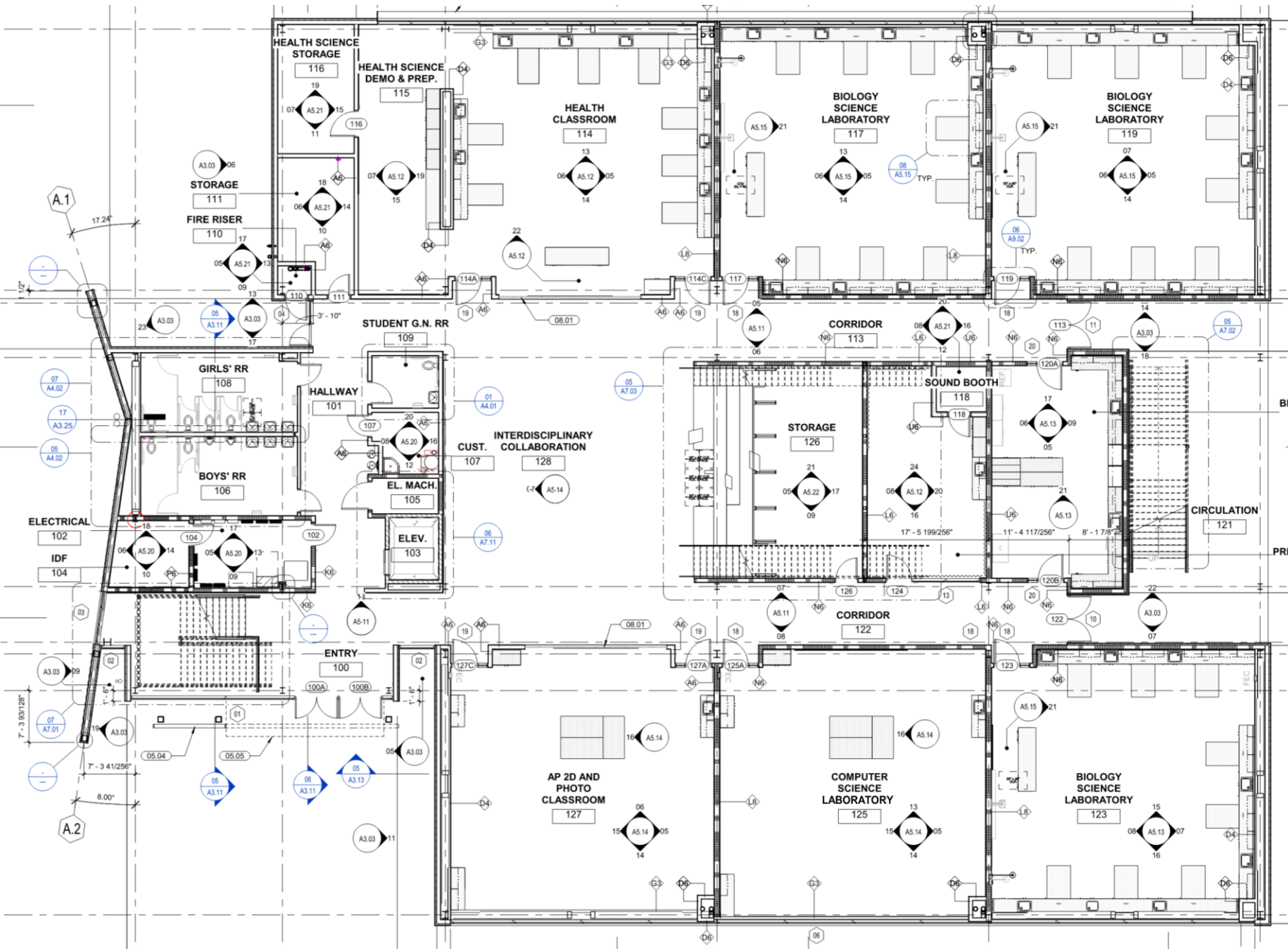
DSHS STEM CENTER





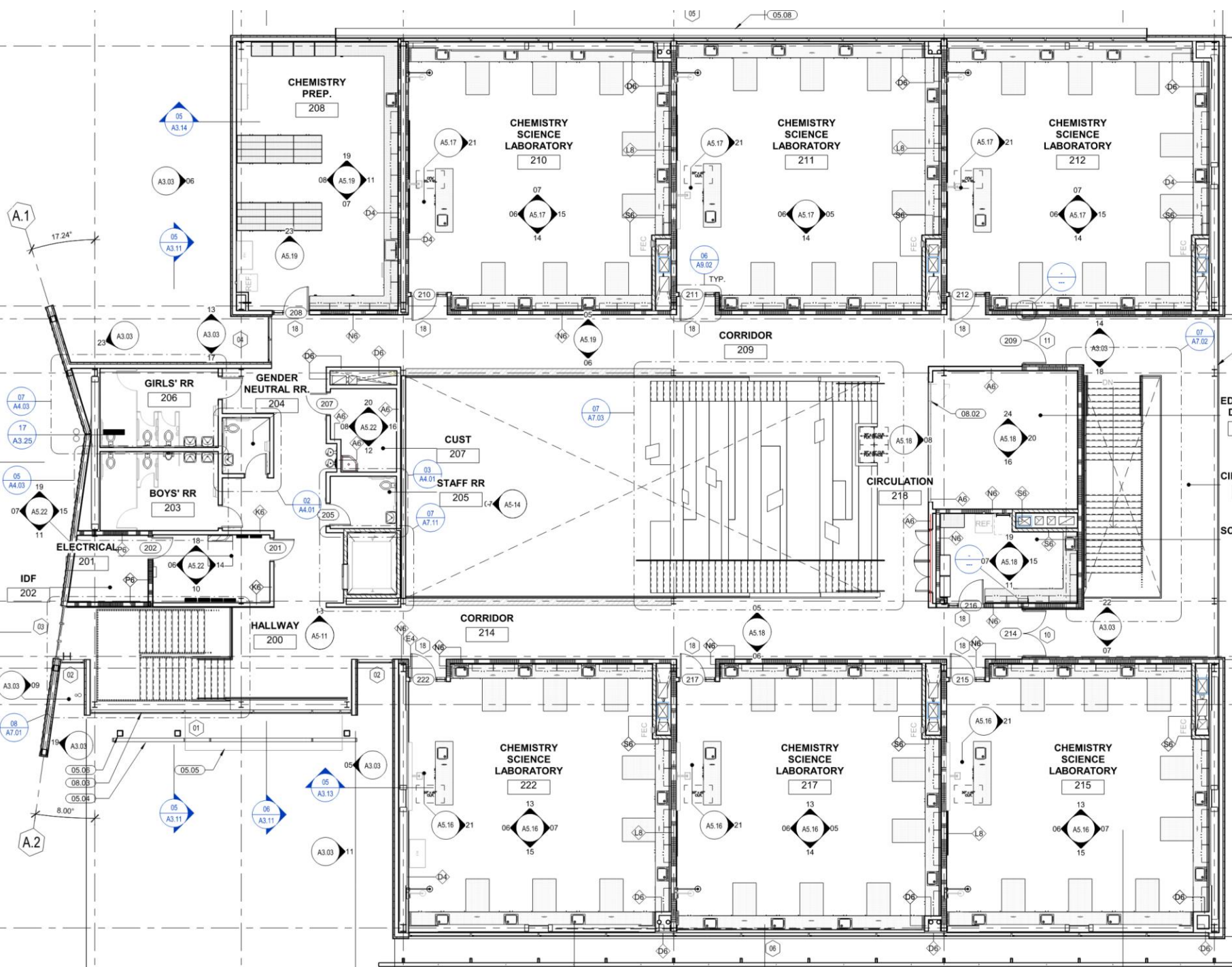


Building Plan Review & Perspectives



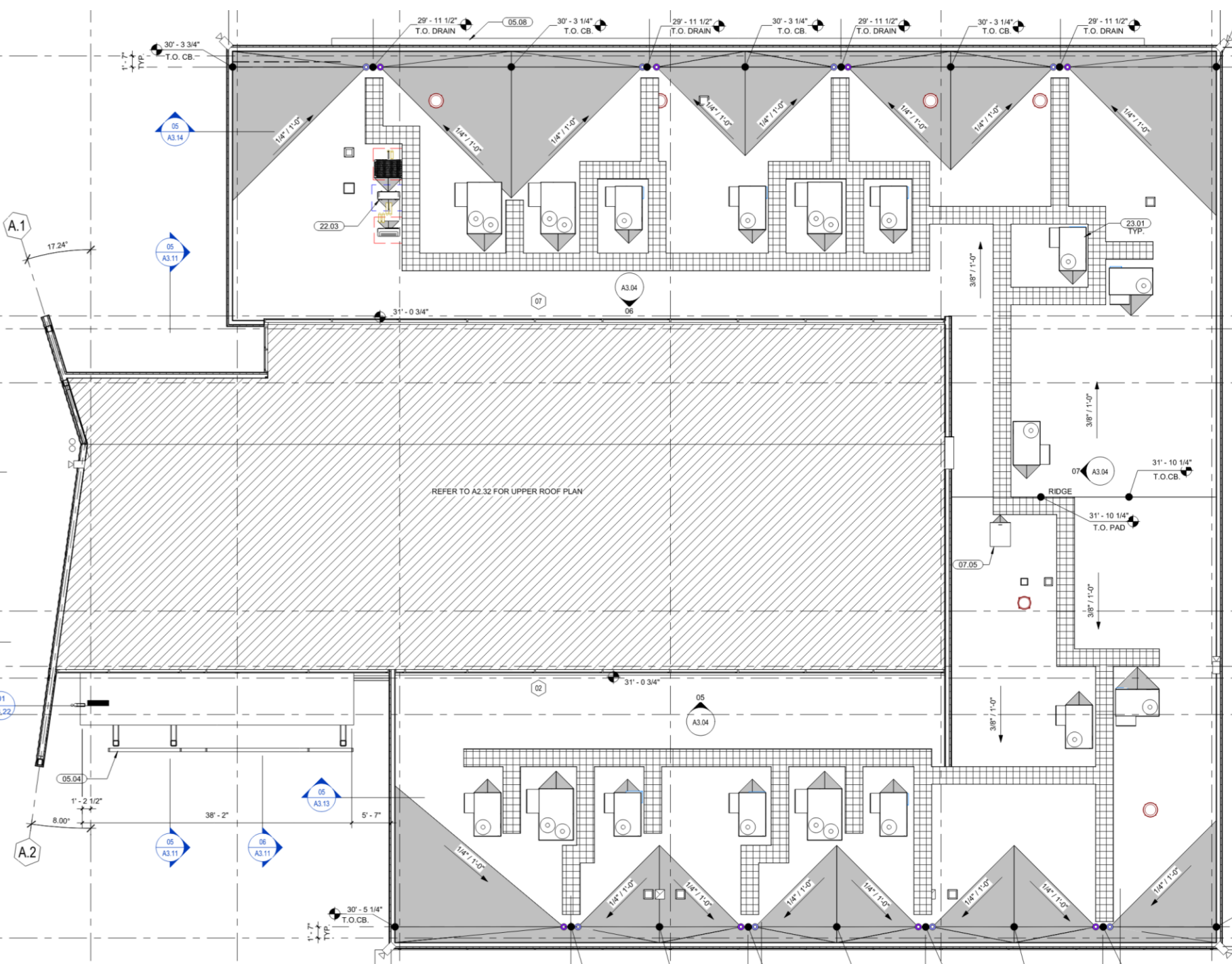
1st Floor Plan - Typologies

- (4) Science Classrooms
- (1) Science Shared Prep.
- (2) Electives Classrooms
- (2) Elective Prep Spaces
- Social Stair & Collaboration
- Student & Staff - Restrooms
- IDF & Electrical Room
- Elevator Core



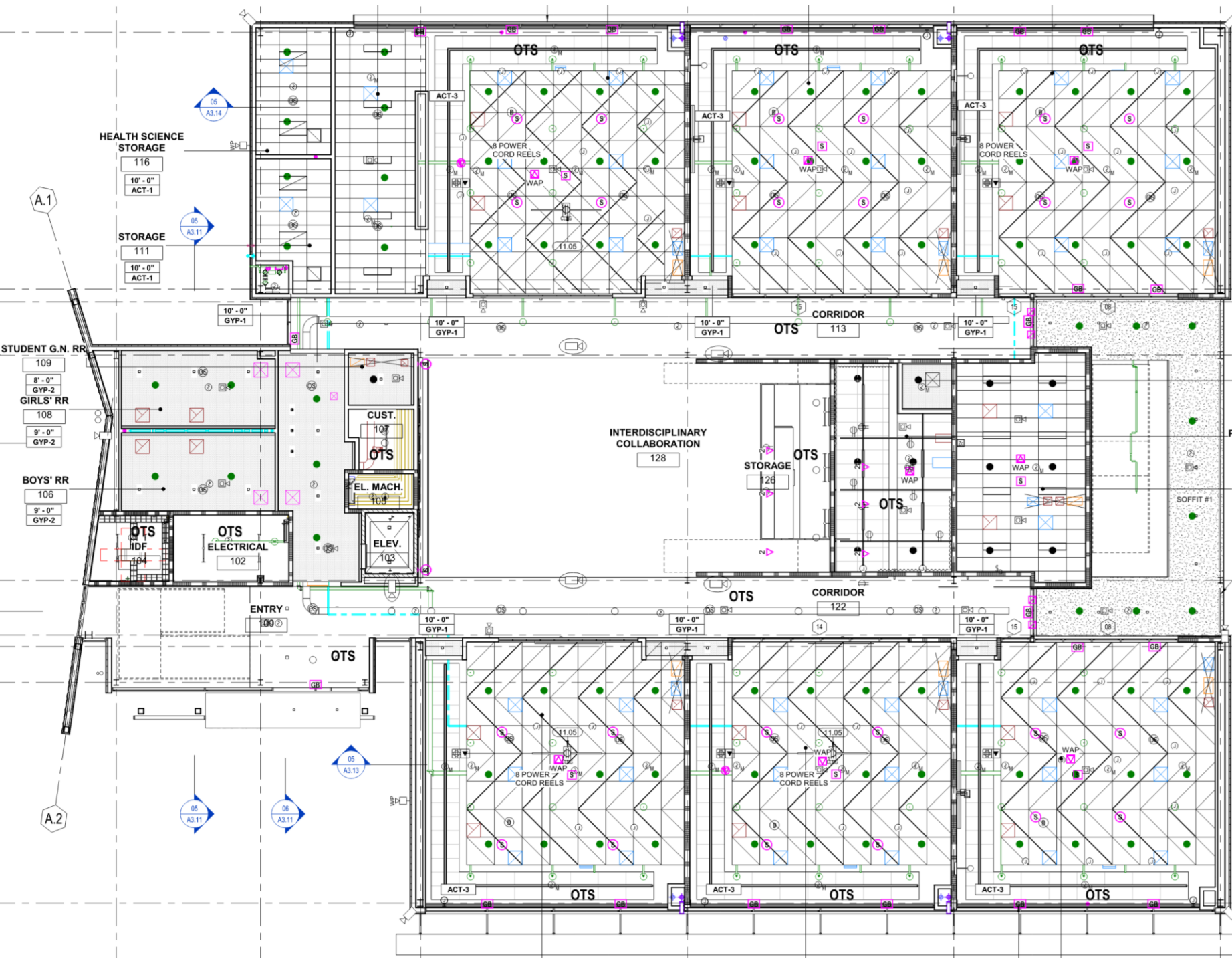
2nd - Floor Plan - Typologies

- (6) Science Classrooms
- (2) Shared Prep.
- (1) Educational Display
- Student & Staff - Restrooms
- IDF & Electrical Room



Roof Plan - Overview

- Units for Each Space
- (1) Roof Access Ladder
- Single Ply Roof Membrane

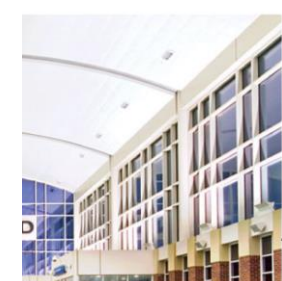
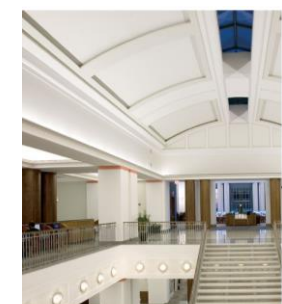
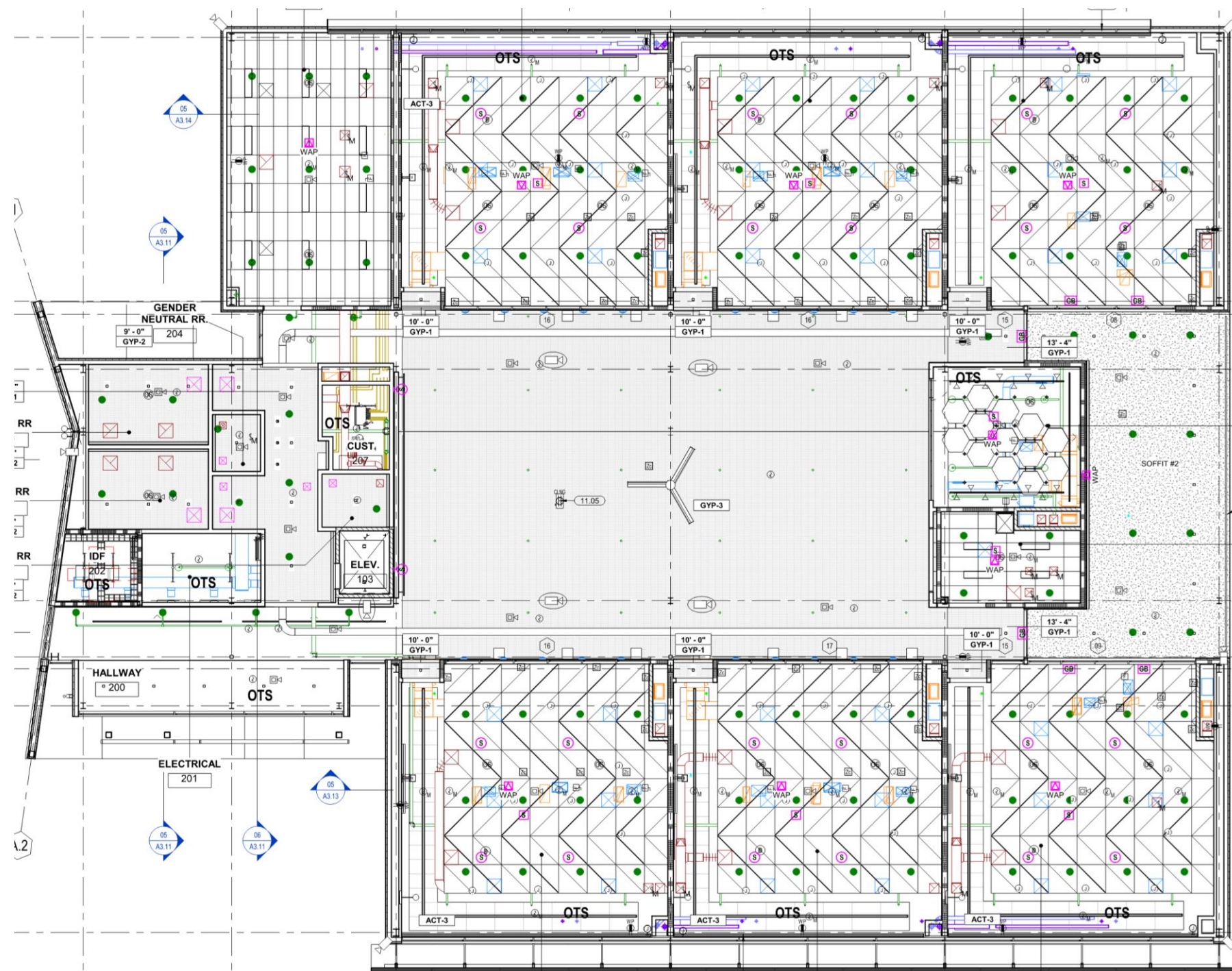


Reflected Ceiling Plan First Floor





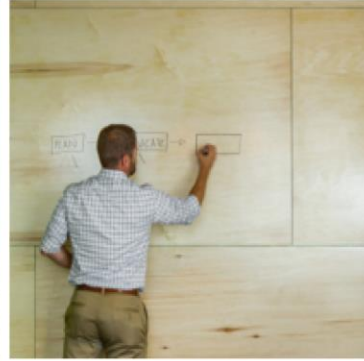
Reflected Ceiling Plan Second Floor



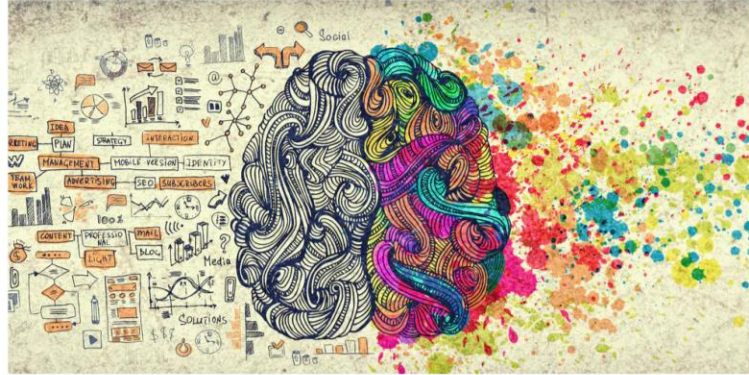
DESIGN CONCEPTS/INTERIOR APPROACH



TRANSPARENCY



CONNECTIVITY



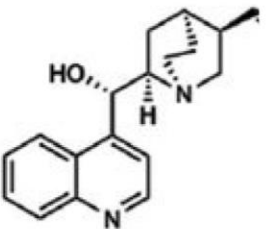
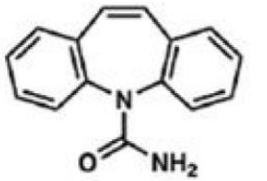
LEFT/RIGHT BRAIN

ACTIVATED COLLABORATION



ENERGY

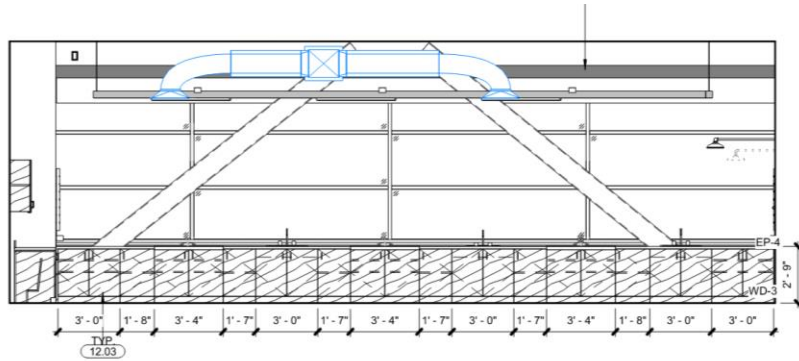
The greatest scientists are artists as well.
— Albert Einstein —



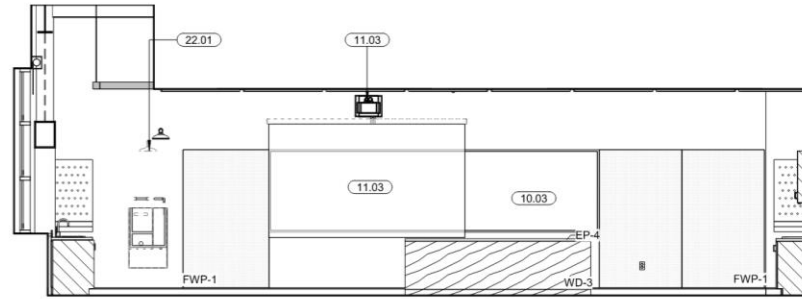
Davis Senior High School

Davis Joint Unified School District

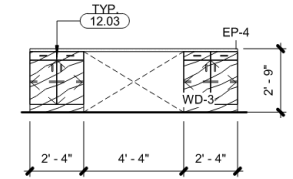
NEW STEM BUILDING



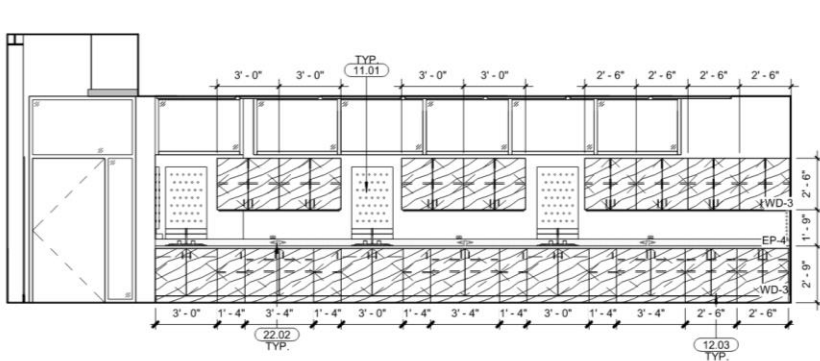
123 BIOLOGY SCIENCE - S | 1/4" = 1'-0" | 16



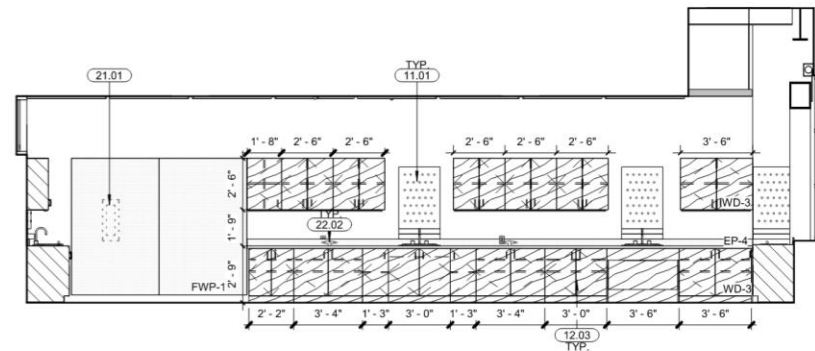
123 BIOLOGY SCIENCE - W | 1/4" = 1'-0" | 08



BIOLOGY TEACHER DEMO TYPICAL INSD. | 21



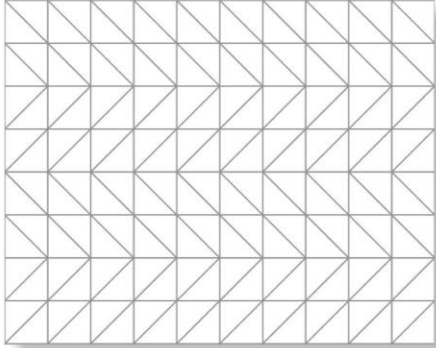
123 BIOLOGY SCIENCE - N | 1/4" = 1'-0" | 15



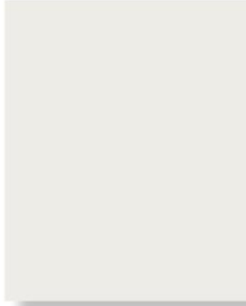
123 BIOLOGY SCIENCE - E | 1/4" = 1'-0" | 07



ACOUSTICAL CEILING
CALLA DESIGNFLEX SH37
ACT-2)



GENERAL PAINT
SHERWIN WILLIAMS
PUREWHITESW7005
(P-1)



TACKABLE PANEL
WALLCOVERING
CARNEGIE METEOR
2031 (FWP-1)



MOTT SCIENCE WOOD
CASEWORK ASH
(WD-3)



EPOXY RESIN
COUNTERTOP
GRAPHITE
(EP-4)



EPOXY FLOOR
STONCLADCOOLSHALE
(EP-2)



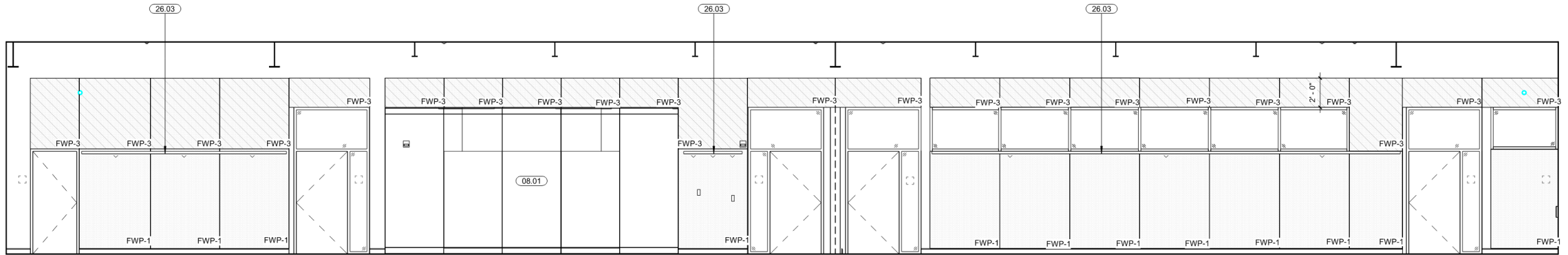
SCIENCE LAB



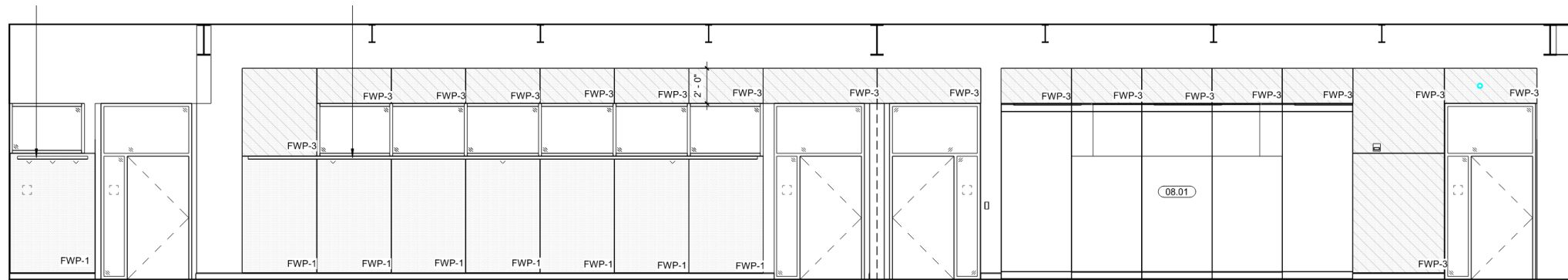
Davis Senior High School

Davis Joint Unified School District

NEW STEM BUILDING



113 CORRIDOR - N | 1/4" = 1'-0" | 05

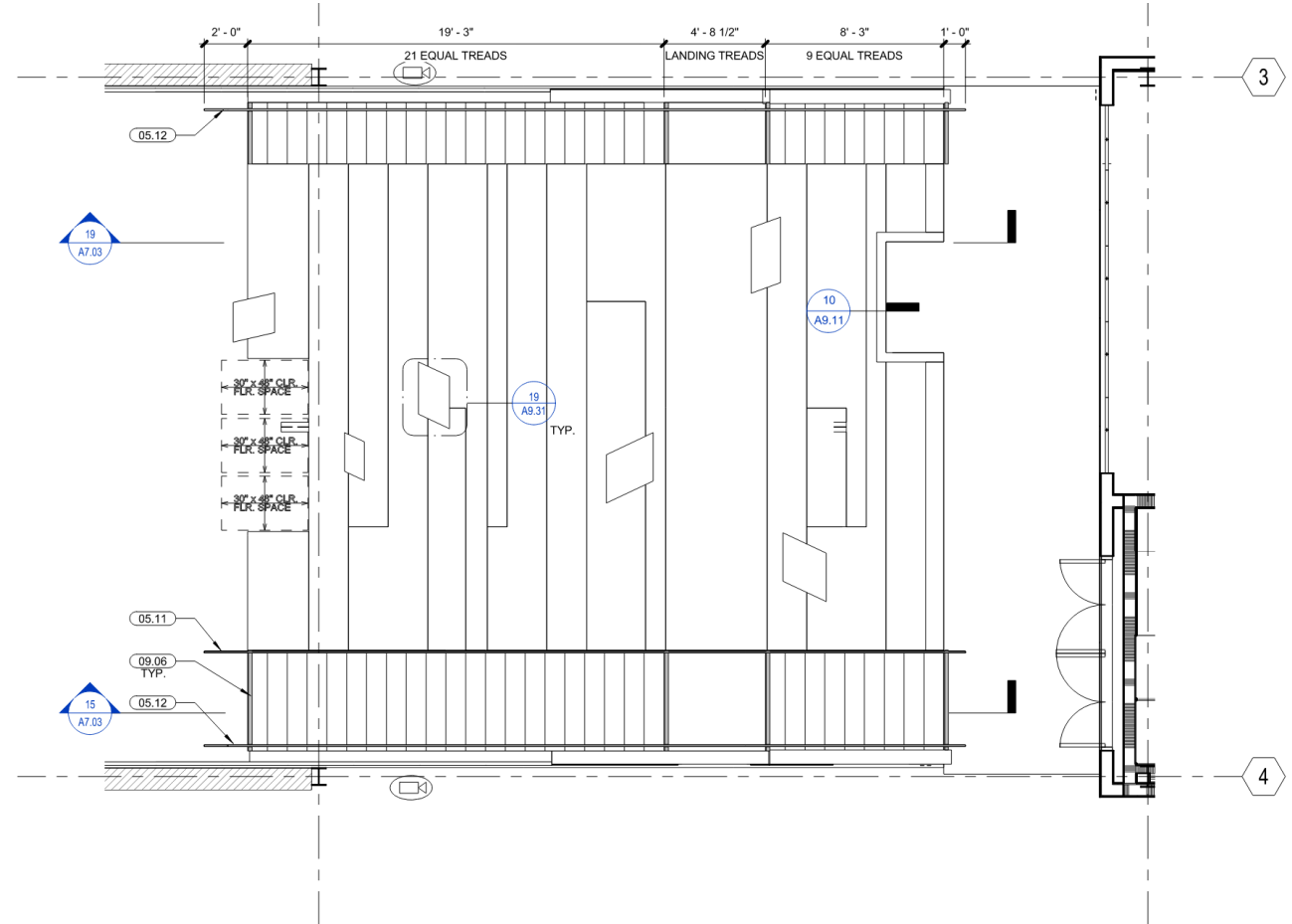
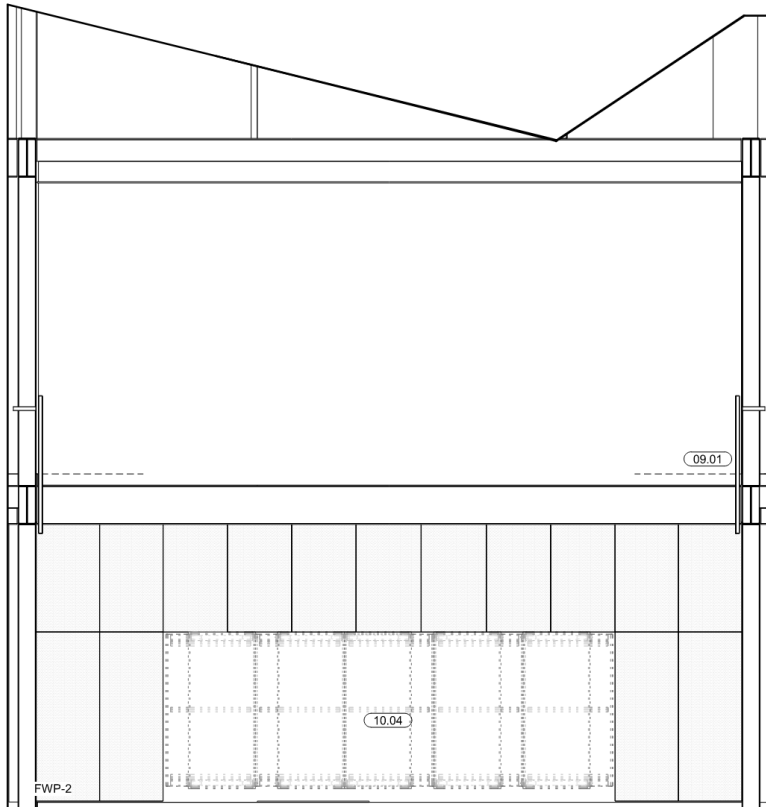


122 CORRIDOR - S | 1/4" = 1'-0" | 08

Davis Senior High School

Davis Joint Unified School District

NEW STEM BUILDING





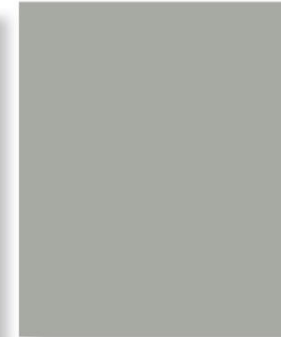
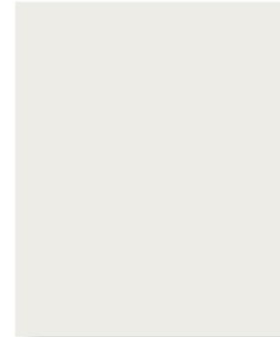
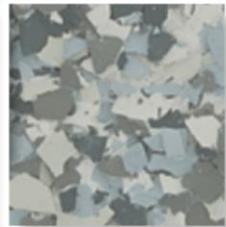
Davis Senior High School

Davis Joint Unified School District

NEW STEM BUILDING



FRP PANEL
MARLITE SMOOTH
COLOR: GRAY
(FRP)



GENERAL PAINT
SHERWIN WILLIAMS
PUREWHITESW7005
(P-1)

ACCENTPAINT(STRUCTURE)
SHERWIN WILLIAMS
GRAY MATTERS SW7066
(P-3)

EPOXY WALL COATING
STONHARD
COLOR: STONEGLAZE
ASH GRAY
(EP-1)

EPOXY FLOOR
STONHARD
COLOR: STONTEC
SMOKEY MOUNTAIN
(EP-2)



POLISHED CONCRETE
(PC-1)

Davis Senior High School

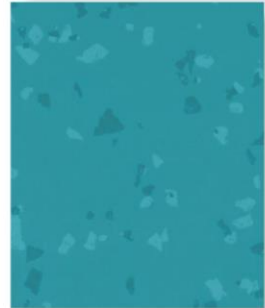
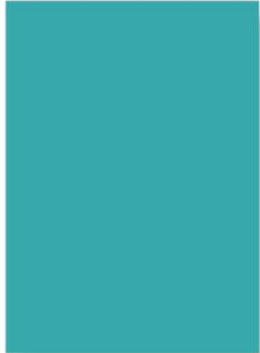
Davis Joint Unified School District

NEW STEM BUILDING



ACCENT PAINT
SHERWIN WILLIAMS
AQUARIUM SW6767
(P-2)

SOCIAL STAIR



RUBBER FLOOR
ROPPE LAGOON
(RF-1)

SOCIAL STAIR

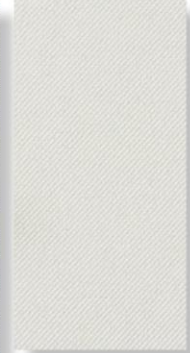
ACCENTACOUSTICAL
PANELWALLCOVERING
CARNEGIE METEOR
2031
(FWP-1)

HALLWAY



ACOUSTICALPANEL
WALLCOVERING
DESIGNTEXGAMUT
CHALK
(FWP-3)

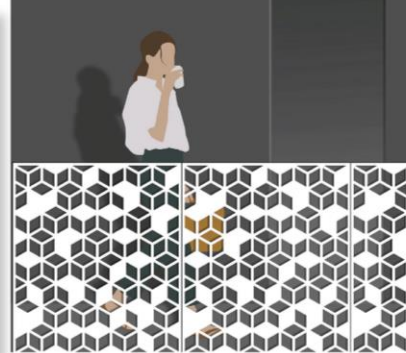
HALLWAY



ACCENTCOLORED
POLISHED
CONCRETE
SCOFIELD
STORM CLOUD
(PC-2)

ACOUSTICAL PANEL
WALLCOVERING
CARNEGIE METEOR
735
(FWP-2)

BOK MODERN A31 (GR)
GUARDRAIL



POLISHED CONCRETE
(PC-1)

HALLWAYS

WOOD PANEL
OBERFLEX ASH T72
(WD-1)

GALLERY



WOOD ACOUSTICAL
PANEL
OBERSOUNDASHWITH
STRETCH
PERFORATION
(WD-2)



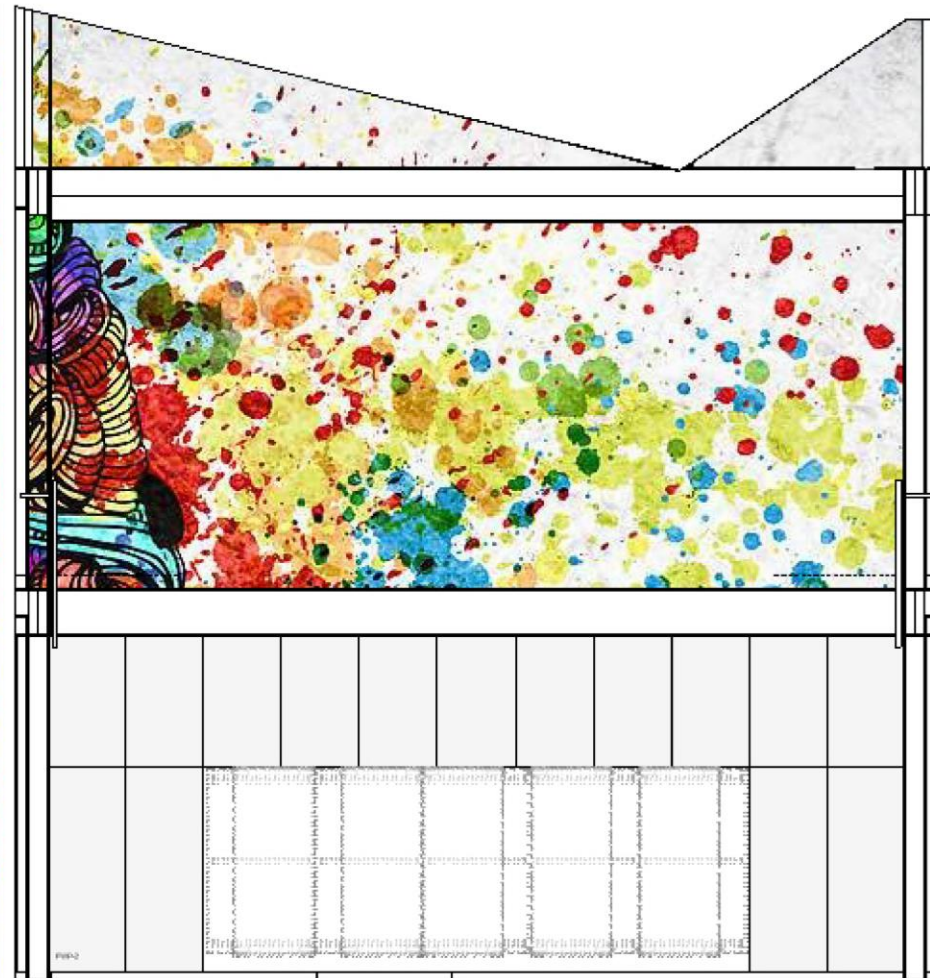
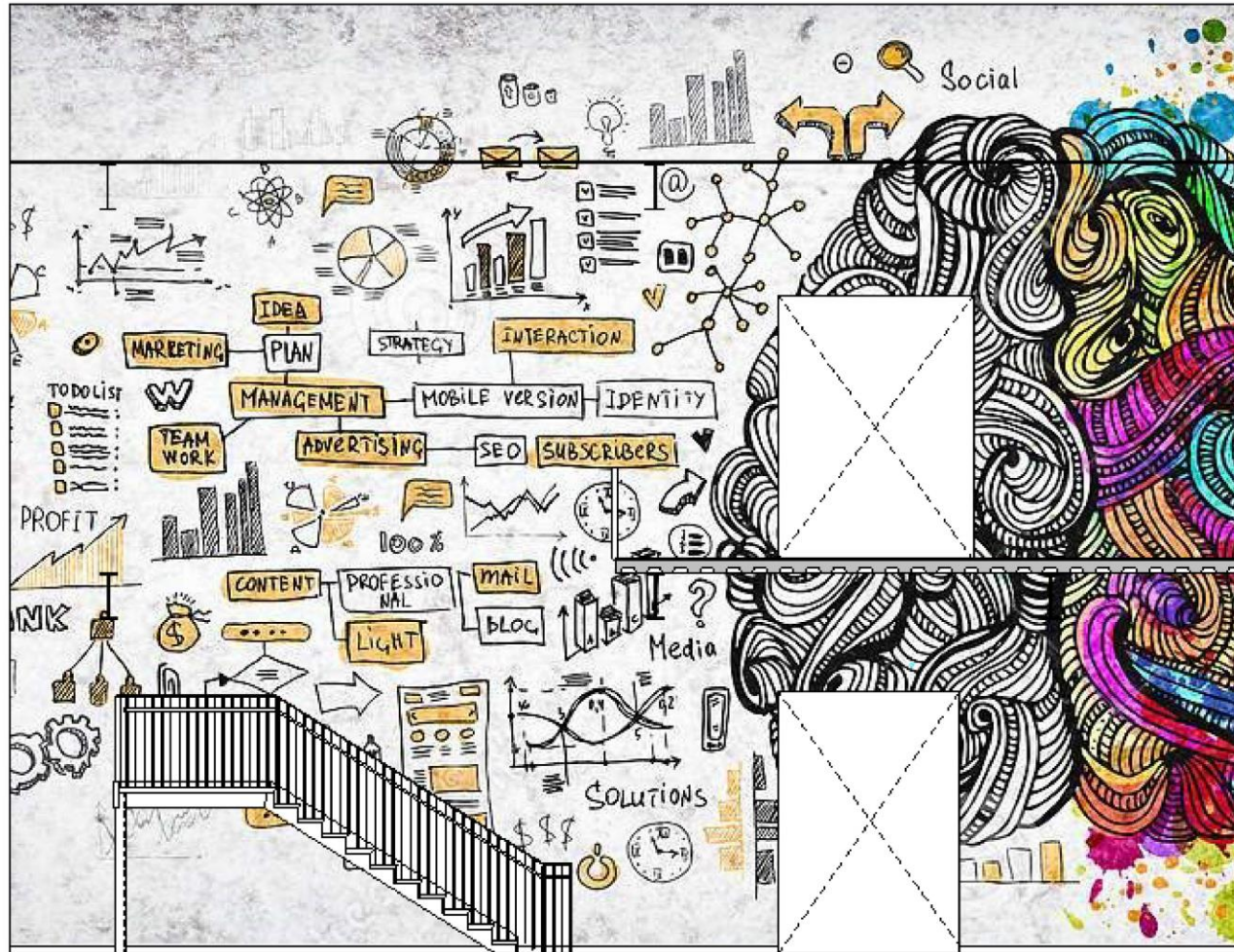
ACOUSTICAL CEILING
ARMSTRONGSOUNDSCAPEHEXAGON
(ACT-4)
GALLERY



Davis Senior High School

Davis Joint Unified School District

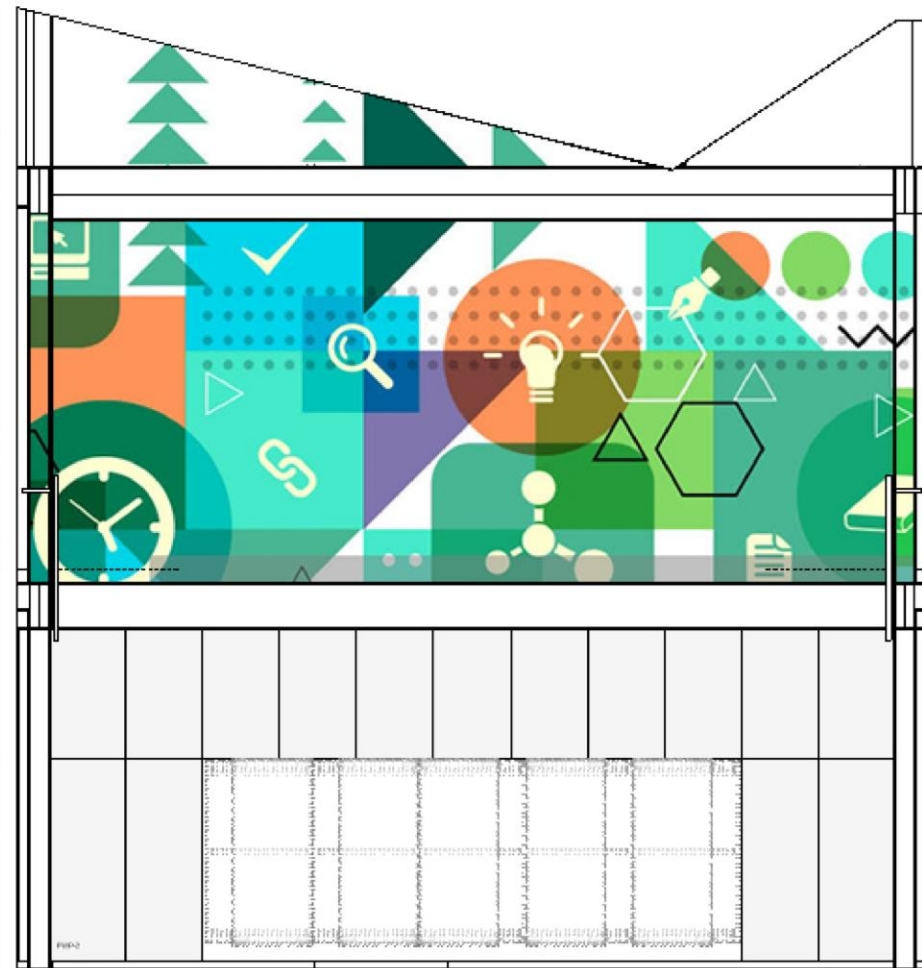
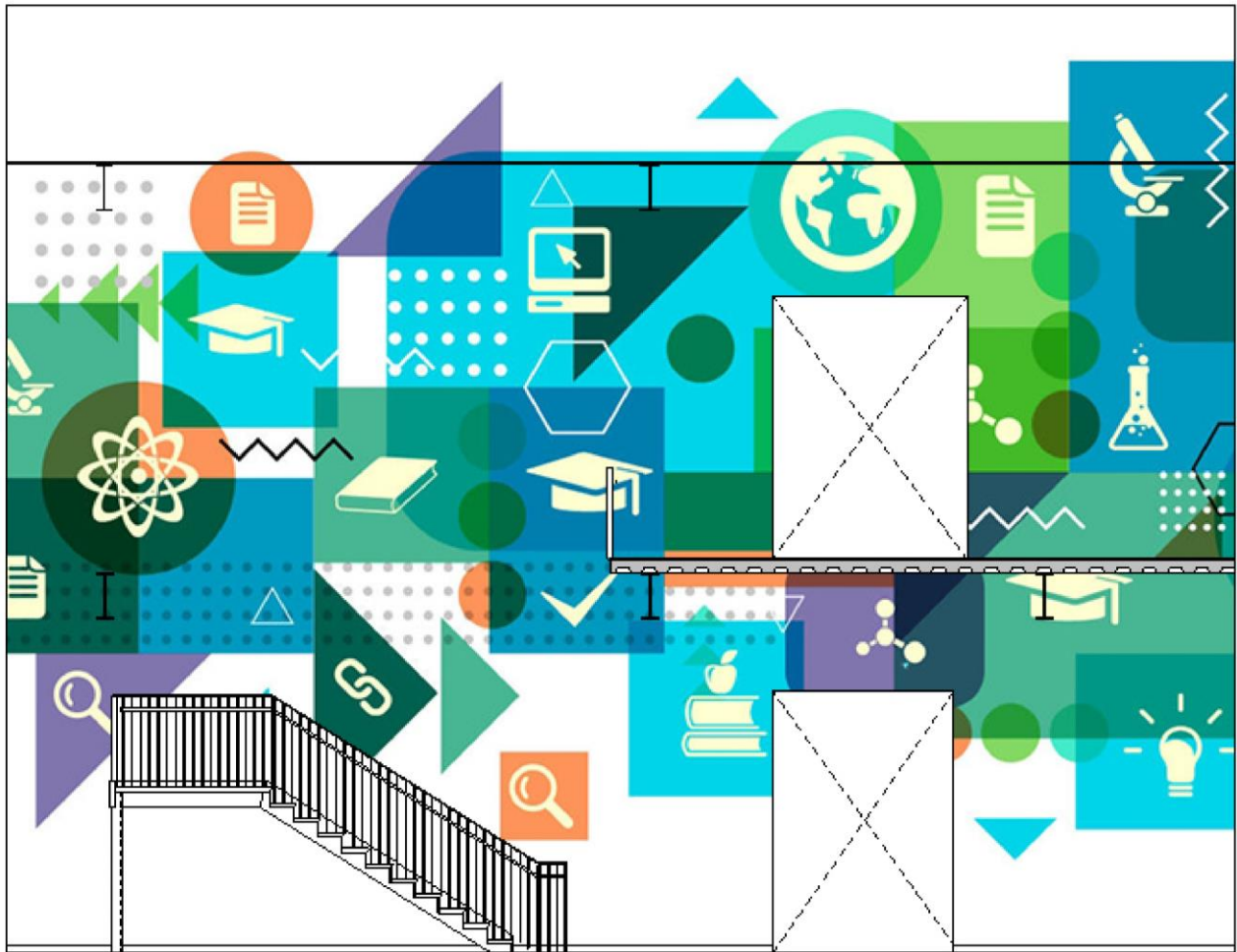
NEW STEM BUILDING



Davis Senior High School

Davis Joint Unified School District

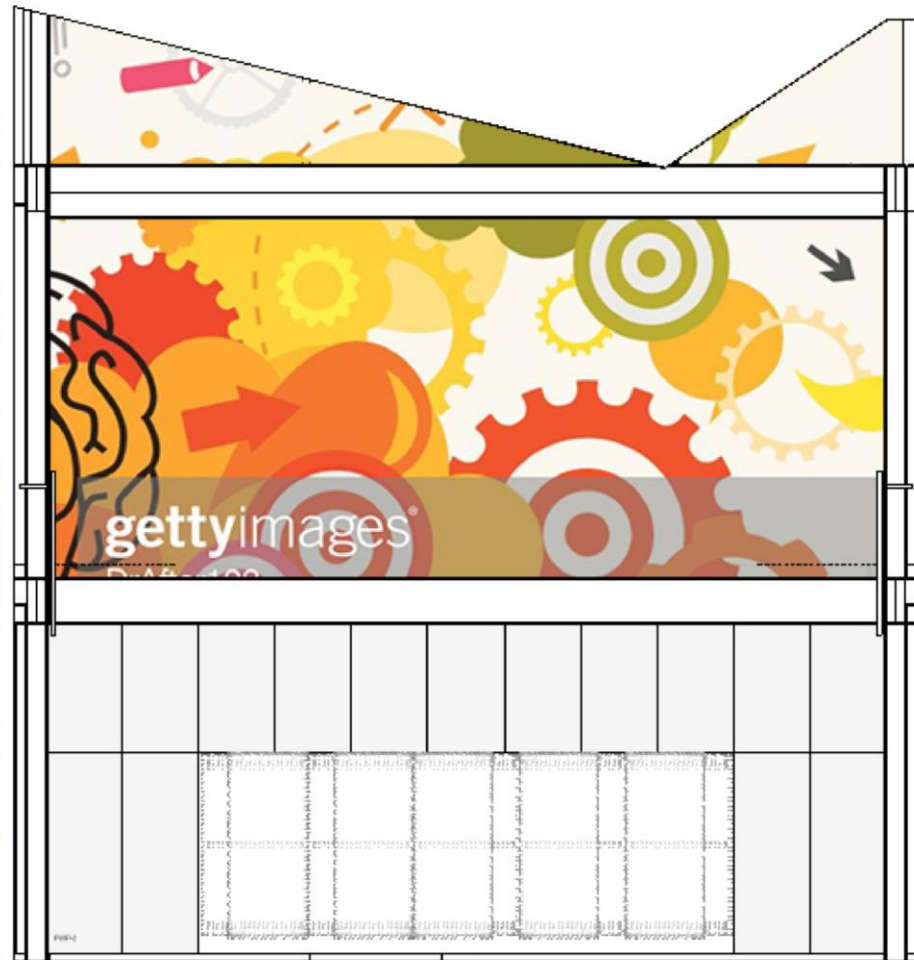
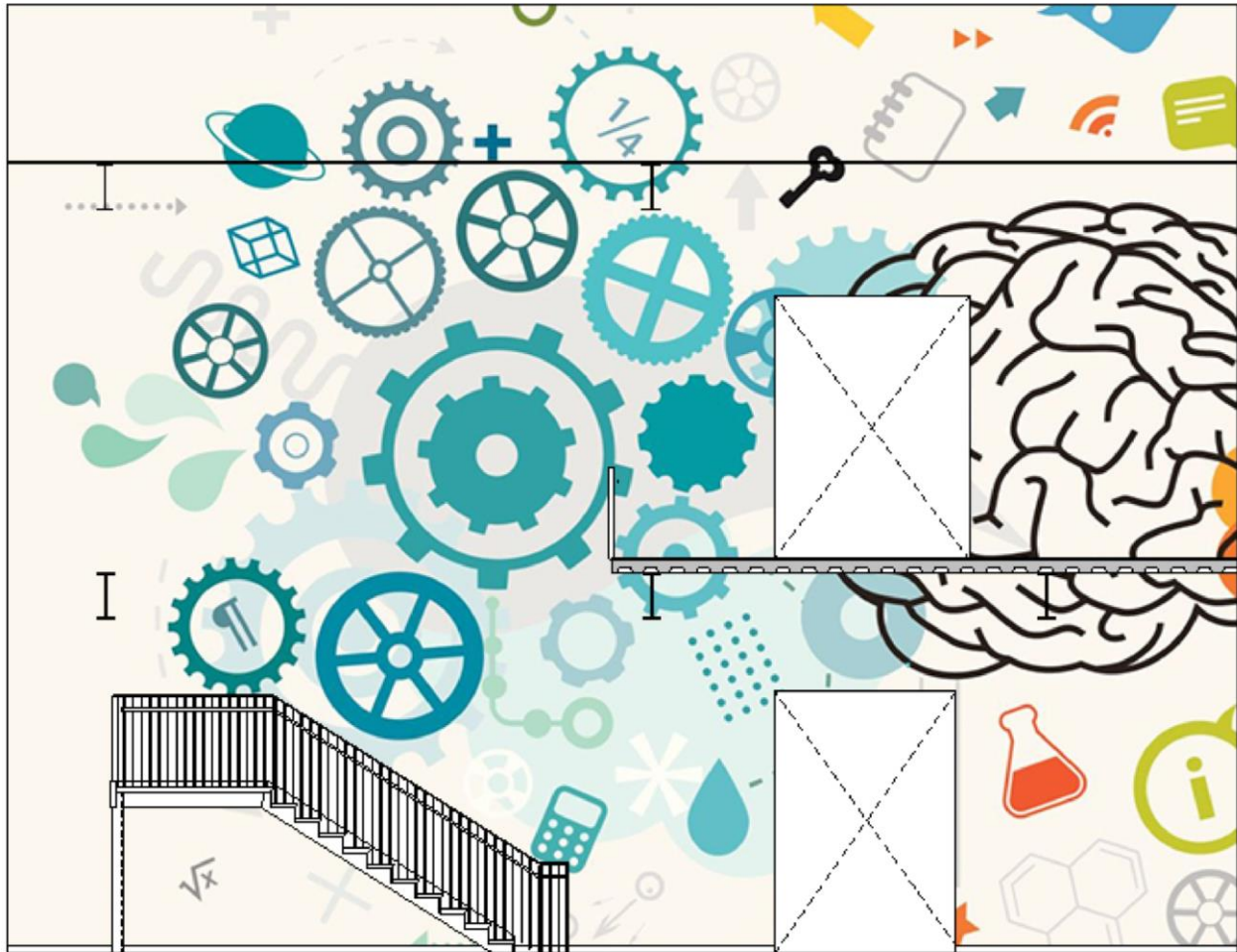
NEW STEM BUILDING



Davis Senior High School

Davis Joint Unified School District

NEW STEM BUILDING



Site Design Review

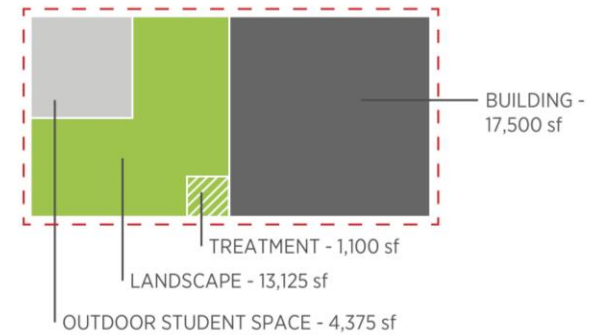
Davis Senior High School

Davis Joint Unified School District

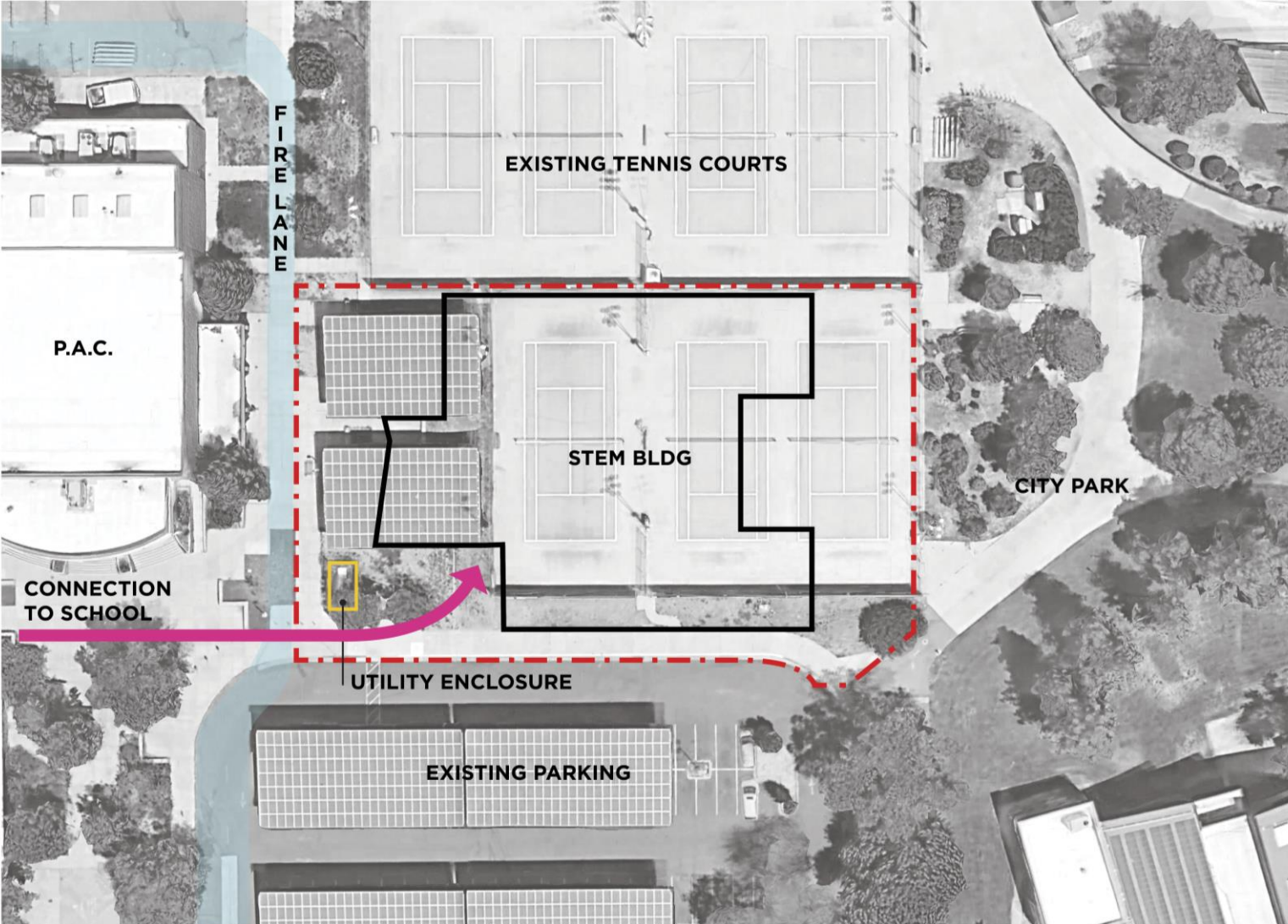
NEW STEM BUILDING



-  **CIRCULATION**
-  **SITE AREA**
Approx. 35,000 sf
-  **BLDG AREA**
Approx. 17,500 sf footprint
-  **FIRE LANE**
14' wide minimum
-  **UTILITY ENCLOSURE**
Maintain in place



SITE AREA DIAGRAM



Davis Senior High School

Davis Joint Unified School District

NEW STEM BUILDING



the 'GARDEN'

All about water and energy in the landscape, the GARDEN treats roof run-off in a space designed for students to engage, interact, and learn from natural systems.

Double duty: engage the treatment area by creating a teaching space adjacent to the biofiltration basin.

Celebrate water: make roof drainage visible and educational through a decorative downspout



Landscape as laboratory: visibly collect roof run-off and discharge into biofiltration basins in a way that highlights natural water treatment.

Year-round cues: planting and 'stream bed' hints at the importance of water even during the dry seasons

Davis Senior High School

Davis Joint Unified School District

NEW STEM BUILDING



the 'YARD'

The YARD is a flexible working space where students can collaborate, experiment, get messy, work together, and make things. Utility and function define the space and supercharges STEM and ART curricula.

Flexible outdoor space with durable surfaces, power, and shade is perfect for art, experimentation, and making.



Flexible work tables for many activities, like robotics, art class or science experiments.

Magnetic writing surfaces encourage creativity and exploration and become a space for instruction or collaboration



Movable furniture adapts to the needs of the class.

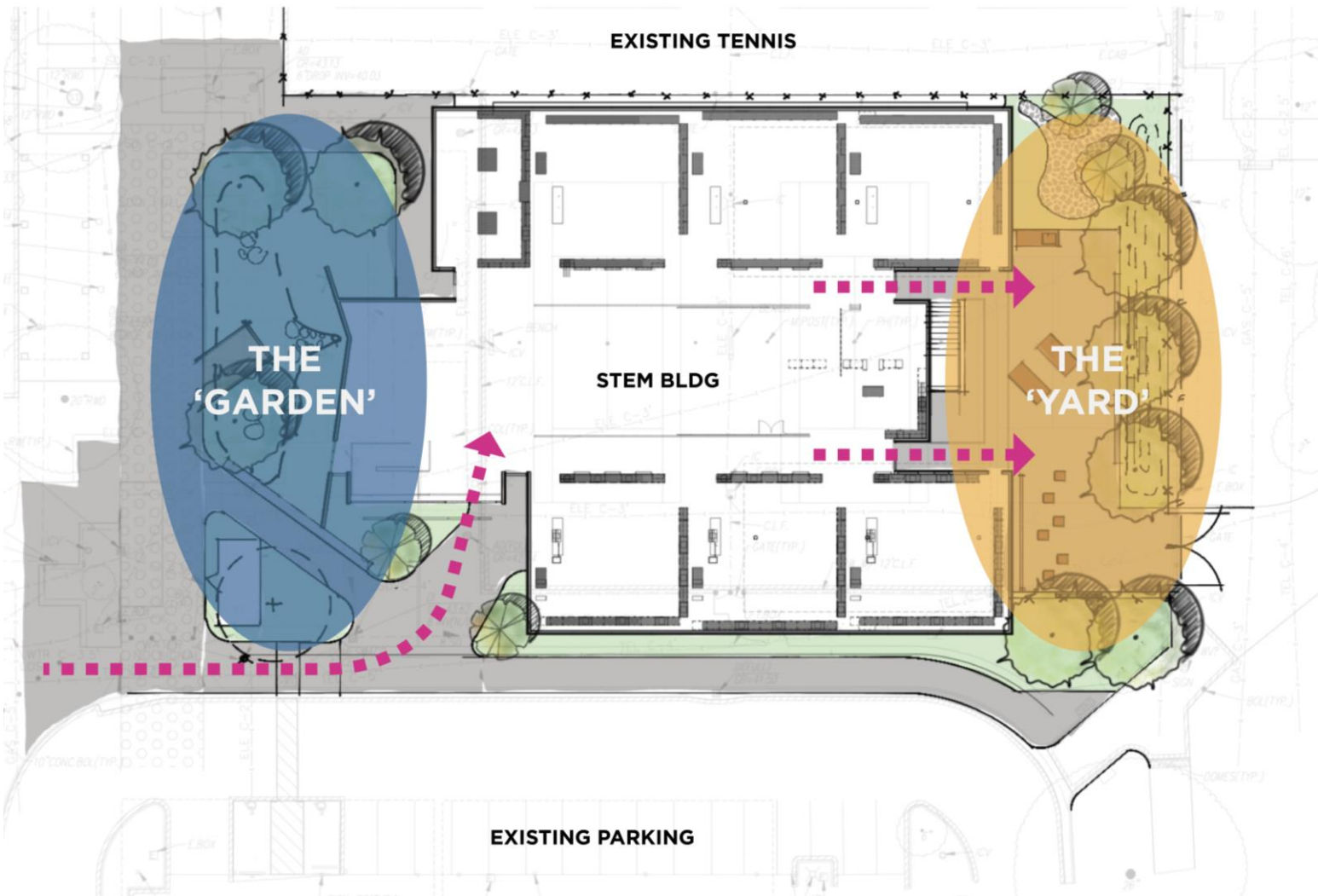
Davis Senior High School

Davis Joint Unified School District

NEW STEM BUILDING



LPA



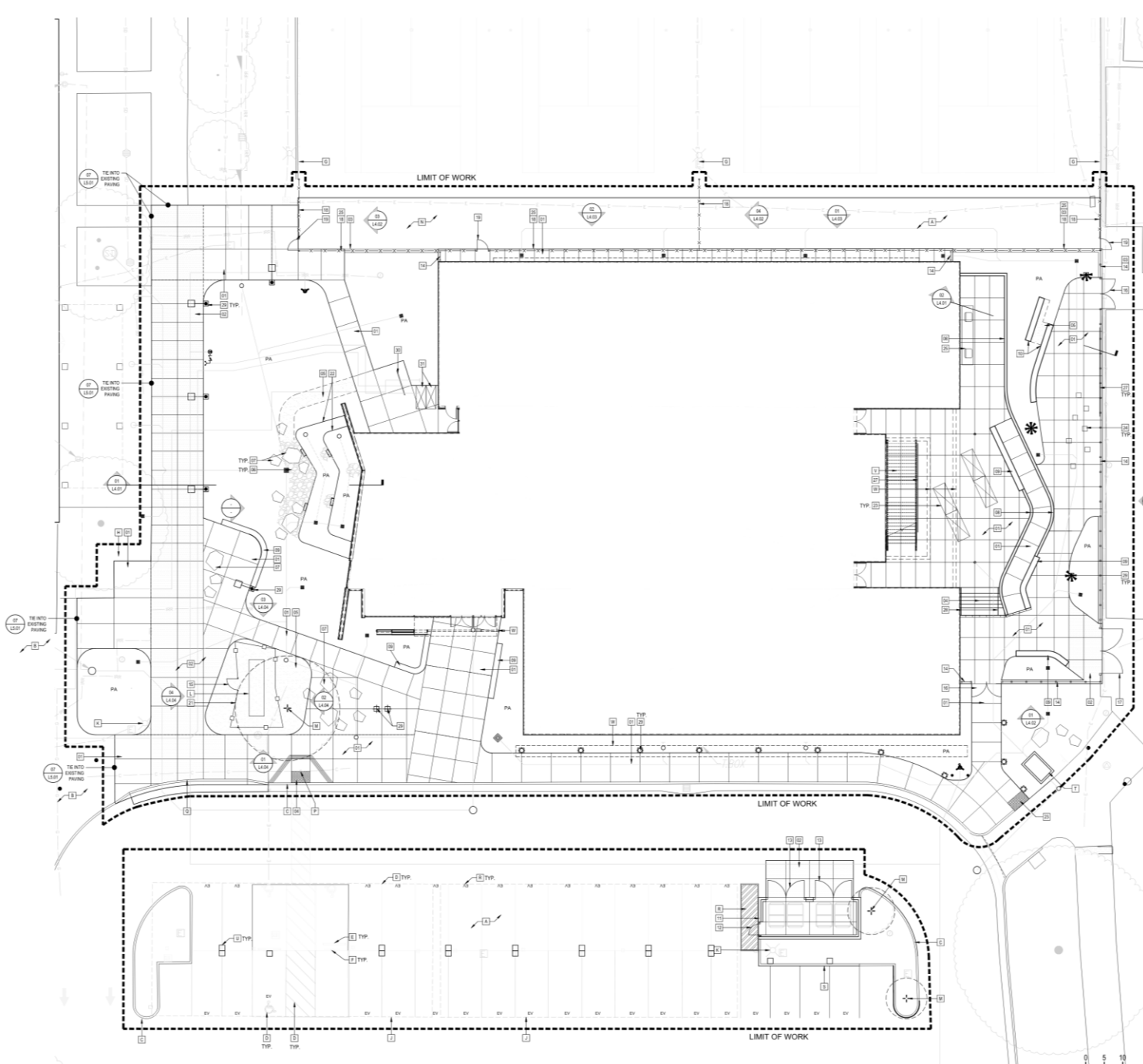
---> CIRCULATION

■ THE GARDEN

All about energy and water, this front door teaches how stormwater runoff is treated in planted infiltration basins by highlighting the natural treatment of water. Use the landscape to sequester carbon and other green house gases in a carbon garden.

■ THE YARD

A flexible, utilitarian space for students to explore, experiment, gather, work, make, and get messy. Dedicated to STEM and the arts, this space is an outdoor laboratory for all subjects.



KEYNOTES

KEY NOTE	DESCRIPTION	DET / SIZE	COLOR / FINISH
01	CONCRETE PAVING PEDESTRIAN	01	NATURAL GRAY
02	CONCRETE PAVING VEHICULAR	01	NATURAL GRAY
03	12" WIDE CONCRETE MONOCURB	09	NATURAL GRAY
04	C.I.P. CONCRETE STAIR	01	NATURAL GRAY
05	STABILIZED DECOMPOSED GRANITE	13	NATURAL GRAY
06	8" X 8" DIA. CORNICE	18	EDGING: BLACK ANTIKNOX
07	3" X 3" DIA. BOLLARD	11	COLORADO CORNICE
08	C.I.P. CONCRETE RETAINING WALL	15	SIERRA GOLD
09	C.I.P. CONCRETE SEAT WALL	15	NATURAL GRAY TOPCAST 15
10	C.I.P. CONCRETE ASPHALTWEAR	15	SIDES & SMOOTH TOP
11	C.I.P. CONCRETE ASPHALTWEAR	15	NATURAL GRAY TOPCAST 15
12	CORRUGATED STEEL	15	SIDES & SMOOTH TOP
13	PEDESTRIAN GATE	15	PRECISION BLACK FRESH
14	PERFORATED METAL FENCE	01	MATCH SW FISH PEARLE MORR
15	PERFORATED METAL FENCE	01	GALV. STEEL W/ HIGH PRES. COATING
16	PERFORATED METAL FENCE	01	MATCH SW FISH PEARLE MORR
17	PERFORATED METAL VEHICULAR GATE	15	PONDEROCAT FRESH
18	PERFORATED METAL VEHICULAR GATE	15	MATCH SW FISH PEARLE MORR
19	PERFORATED METAL VEHICULAR GATE	15	PONDEROCAT FRESH
20	CHAROLIN FENCE	13	MATCH SW FISH PEARLE MORR
21	CHAROLIN SINGLE PEDESTRIAN GATE	14	PONDEROCAT FRESH
22	SPORTS NETTING	01	GALVANIZED
23	DECORATIVE PERFORATED SCREEN	15	BLACK WILSON
24	STEEL EDGING BASED BIOPERTRATION PLANTER	14	MATCH SW FISH PEARLE MORR
25	TRUNCATED DOMES	15	PONDEROCAT FRESH
26	MOVABLE STOOL	09	2" BOTTLE BRONZ MEDIA OVER 1" DRAIN ROCK
27	WORK TABLE ON CASTERS	19	WING TILE GOLF 12" X 12" PAVERS
28	MAGNETIC VERTICAL WRITING SURFACE	13	15.01
29	HANDRAIL AT STAIRS	01	15.01
30	SITE LIGHTING	01	15.01
31	BIKE RACK	01	15.01
32	BIKE LOCKER	01	15.01

REFERENCE KEYNOTES

KEY NOTE	DESCRIPTION	COMMENTS
01	EXISTING AC PAVING	PROTECT IN PLACE
02	EXISTING CONC PAVING	PROTECT IN PLACE
03	EXISTING CURB/GUTTER	PROTECT IN PLACE
04	EXISTING STOPPING	PROTECT IN PLACE
05	EXISTING WHEEL STOP	PROTECT IN PLACE
06	EXISTING SIGNAGE	PROTECT IN PLACE
07	EXISTING FENCING AND GATES	PROTECT IN PLACE
08	EXISTING HALL	PROTECT IN PLACE
09	EXISTING SOLAR STRUCTURE	PROTECT IN PLACE
10	EXISTING LIGHT POLES	PROTECT IN PLACE
11	EXISTING ELEC UTILITY	PROTECT IN PLACE
12	EXISTING TREE	PROTECT IN PLACE
13	AC PAVING	PER CIVIL PLANS
14	CURB RAMP	PER CIVIL PLANS
15	ROLLED CURB	PER CIVIL PLANS
16	PARKING LOT STRIPING	PER CIVIL PLANS
17	CURB/GUTTER	PER CIVIL PLANS
18	MODULAR HETLANDS	PER CIVIL PLANS
19	EV CHARGER	PER ELECTRICAL PLANS
20	STAR	PER ARCH PLANS
21	BUILDING OVERWING	PER ARCH PLANS

SITE LIGHTING LEGEND

SYM.	DESCRIPTION	DET / SIZE	COMMENTS
⊕	EVENT POLE		SEE ELEC PLANS FOR MODEL AND COLOR
⊕	ACCENT POLE		SEE ELEC PLANS FOR MODEL AND COLOR
⊕	PEDESTRIAN POLE		SEE ELEC PLANS FOR MODEL AND COLOR
⊕	PEDESTRIAN BOLLARD		SEE ELEC PLANS FOR MODEL AND COLOR

SITE SYMBOLS LEGEND

SYM.	DESC.	SYM.	DESC.	DET
⊕	FIRE HYDRANT	⊕	SAWCUT JOINT	ES, LS, 01
⊕	CLEANOUT	⊕	SAWCUT EXPANSION JOINTS	ES, LS, 01
⊕	DRAIN INLET	---	MATCHLINE	
⊕	DOMESTIC WATER METER	---	PROPERTY LINE	
⊕	IRRIGATION WATER METER	---	RIGHT OF WAY	
⊕	DOMESTIC BACKFLOW PREVENTOR	---	LIMIT OF WORK	
⊕	POET INDICATOR VALVE	---	T.O.S. TOP OF SLOPE	
⊕	FIRE DEPT. BACKFLOW	---	B.O.S. TOE (BOTTOM) OF SLOPE	
⊕	DOWN SLOPE	---	FOC FACE OF CURB	
⊕	DIRECTION OF RAMP	---	BOC BACK OF CURB	
⊕	ALIGN	---	PA PLANTING AREA	
⊕	DOUBLE DETECTOR CHECK	---	⊕	GATE VALVE
⊕	VALVE	---	⊕	WATER VAULT
⊕	SEWER MANHOLE	---		

NOTES: DIMENSIONS SHOWN ARE FOR REFERENCE ONLY. SEE CIVIL AND ELEC CHGS FOR DETAILS AND EXACT LOCATIONS. FINAL LOCATIONS TO BE REVIEWED BY LANDSCAPE ARCHITECT.



MATERIALS PLAN

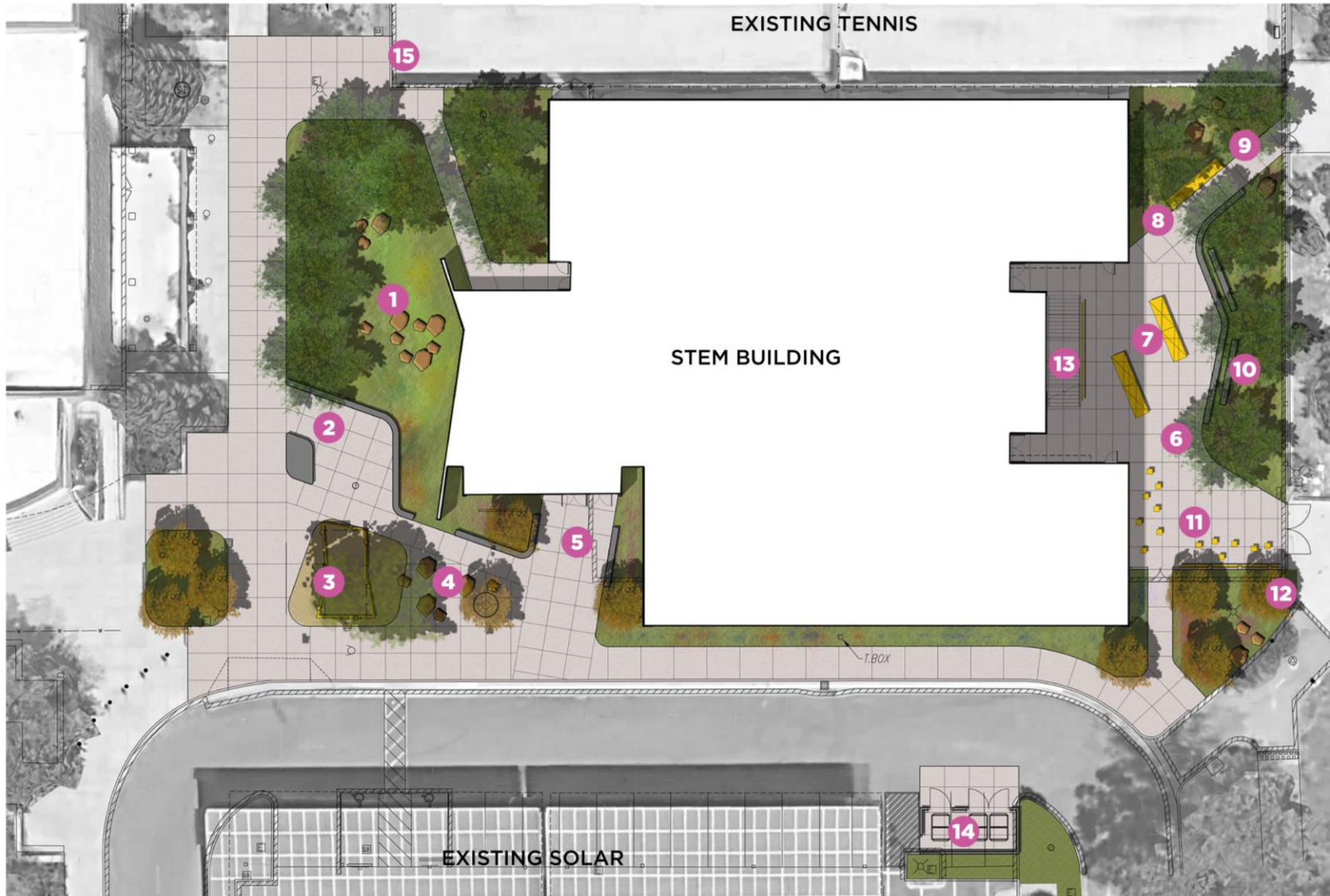
Davis Senior High School

Davis Joint Unified School District

NEW STEM BUILDING



LPA



LEGEND

- 1 'THE GARDEN' Stormwater management garden.
- 2 Learning pod w/ seatwall and benching
- 3 Perforated metal utility enclosure + d.g. paving
- 4 Boulder seating
- 5 Seatwalls at building entry
- 6 'THE YARD' flexible workspace
- 7 Concrete work benches on casters
- 8 Concrete table w/ sinks
- 9 Robotics agility course
- 10 Tiered seating and planted berm
- 11 Collaboration space w/ magnetic vertical writing surface and movable stools
- 12 Perforated metal screen fence
- 13 Understair storage
- 14 Trash enclosure
- 15 New tennis access gate